

# MONTHLY MEMBERSHIP PROGRESS REPORT

LOCATION OREGON

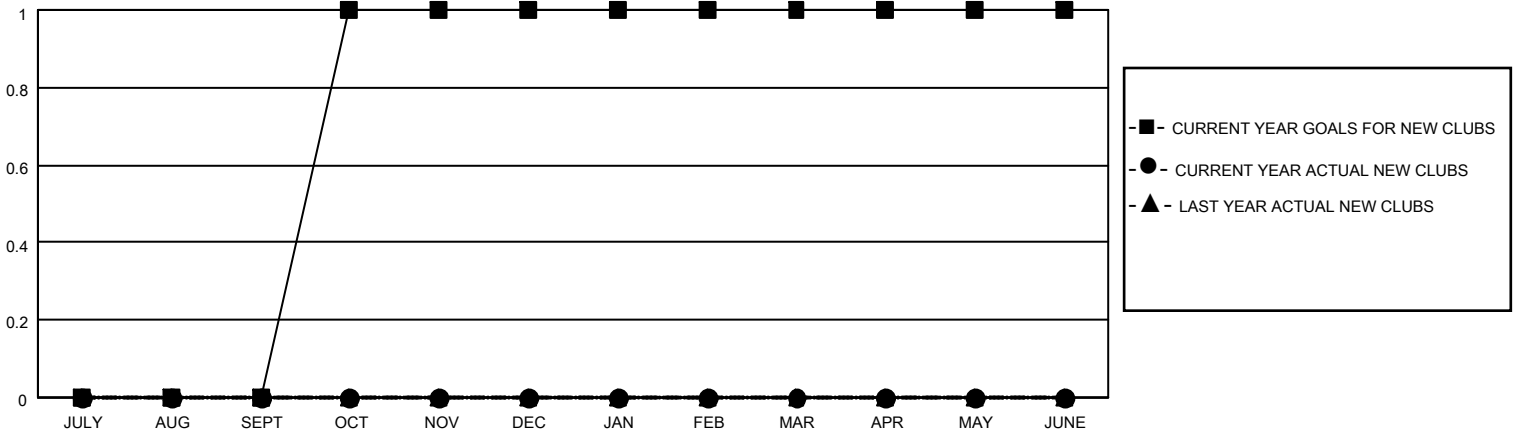
District 36 E

Results as of: 4/30/2021

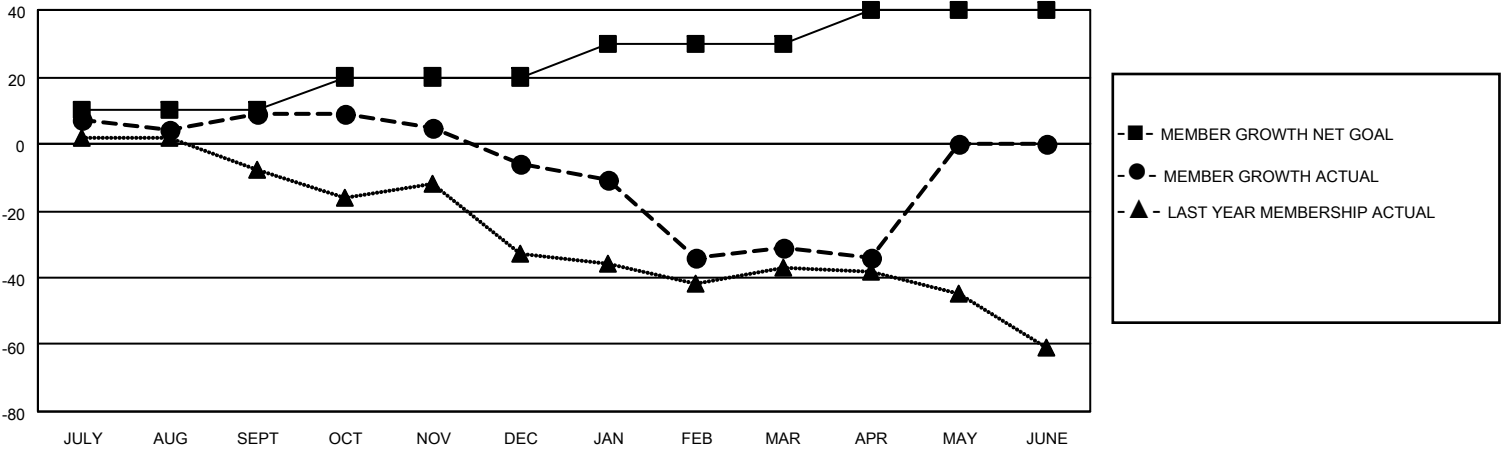
Clubs			
RESULTS FOR 2020-2021			
QUARTER	NEW CLUB GOAL	NEW CLUBS	DROPPED CLUBS
JULY/AUG/SEPT	0	0	0
OCT/NOV/DEC	1	0	0
JAN/FEB/MAR	0	0	1
APR/MAY/JUNE	0	0	0

Members			
RESULTS FOR 2020-2021			
QUARTER	MEMBER GROWTH NET GOAL	MEMBER GROWTH ACTUAL	DROPPED MEMBERS ACTUAL (including transfers)
JULY/AUG/SEPT	10	24	10
OCT/NOV/DEC	10	13	27
JAN/FEB/MAR	10	10	35
APR/MAY/JUNE	10	0	3

**GOALS AND ACTUAL NEW CLUBS CUMULATIVE**



**GOALS AND ACTUAL MEMBERS CUMULATIVE**



**DROPPED CLUBS: 1**

14 CLUBS OF 33 ADDED 1 OR MORE NEW MEMBERS

<u>GENDER DISTRIBUTION</u>	
MALE	401 (60.94%)
FEMALE	257 (39.06%)

<u>DROPPED MEMBERS</u>	
DECEASED	12
CLUB CANCELLED	15
OTHER	48
<b>TOTAL</b>	<b>75</b>

[CLICK HERE FOR CUMULATIVE MEMBERSHIP DATA](#)

TOTAL FAMILY UNIT MEMBERS	202
FAMILY MEMBERS PAYING HALF DUES	104